

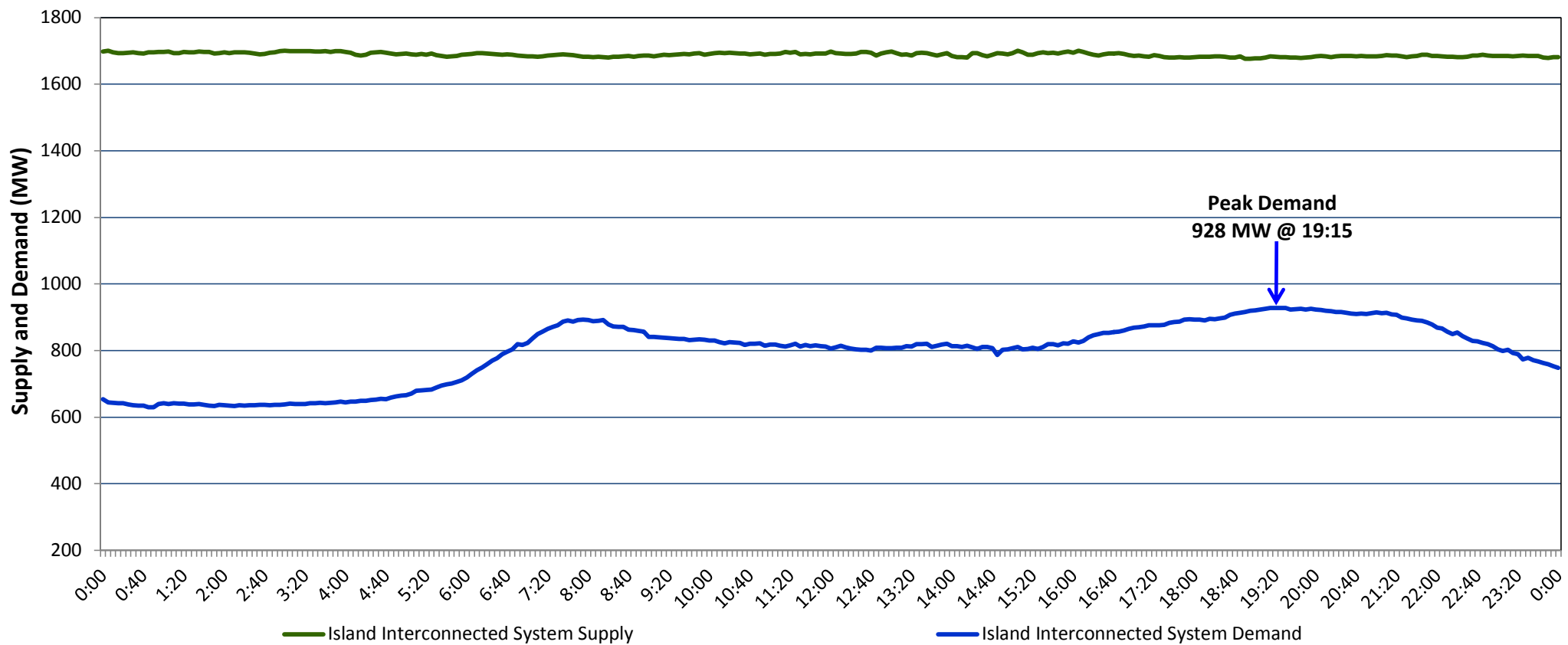
Newfoundland Labrador Hydro (NLH)

Supply and Demand Status Report Filed Friday, October 13, 2017

Section 1

Island Interconnected System Supply and Demand

Actual 24 Hour System Performance For Thursday, October 12, 2017



Supply Notes For October 12, 2017

1,2

A As of 0827 hours, July 31, 2017, Holyrood Unit 2 unavailable due to planned outage 165 MW (170 MW).

B As of 1527 hours, September 17, 2017, Cat Arm Unit 1 unavailable due to planned outage (67 MW).

C As of 1229 hours, September 22, 2017, Stephenville Gas Turbine available at 25 MW (50 MW).

D As of 1211 hours, October 01, 2017, Cat Arm Unit 2 unavailable due to planned outage (67 MW).

E As of 0900 hours, October 11, 2017, St. Anthony Diesel Plant available at 8.85 MW (9.7 MW).

Section 2

Island Interconnected Supply and Demand

Fri, Oct 13, 2017	Island System Outlook <sup>3</sup>	Seven-Day Forecast	Temperature (°C)		Island System Daily Peak Demand (MW)
			Morning	Evening	
Available Island System Supply: <sup>5</sup> NLH Generation: <sup>4</sup> NLH Power Purchases: <sup>6</sup> Other Island Generation: Current St. John's Temperature: Current St. John's Windchill: 7-Day Island Peak Demand Forecast:	1,660 MW 1,365 MW 105 MW 190 MW 3 °C N/A °C 1,080 MW	Friday, October 13, 2017	5	5	990
		Saturday, October 14, 2017	6	10	950
		Sunday, October 15, 2017	11	8	915
		Monday, October 16, 2017	15	8	1,010
		Tuesday, October 17, 2017	7	5	1,080
		Wednesday, October 18, 2017	4	4	1,075
		Thursday, October 19, 2017	4	5	1,040

Supply Notes For October 13, 2017

3

- Notes:
1. Generation outages for running and corrective maintenance are included. These are not unusual for power system operations. They generally do not impact customer supply. The power system operators schedule outages to system equipment whenever possible to coincide with periods when customer demands are low and sufficient supply reserves are available. However, from time to time equipment outages are necessary and reserves may be impacted.

2. Due to the Island Interconnected System being isolated from the larger North American grid, when there is a sudden loss of large generating units some customer's load must be interrupted for short periods to bring generation output equal to customer demand. This automatic action of power system protection, referred to as under frequency load shedding, is necessary to ensure the integrity and reliability of system equipment. Under frequency events typically occur 5 to 8 times per year on the Island Interconnected System and the resultant customer load interruptions are generally less than 30 minutes.

3. As of 0800 Hours.

4. Gross output including station service at Holyrood (24.5 MW) and improved NLH hydraulic output due to water levels (35 MW).

5. Gross output from all Island sources (including Note 4).

6. NLH Power Purchases include: CBPP Co-Gen, Nalcor Exploits, Rattle Brook, Star Lake, Vale capacity assistance (when applicable), and Wind Generation.

Section 3

Island Peak Demand Information

Previous Day Actual Peak and Current Day Forecast Peak

Thu, Oct 12, 2017	Actual Island Peak Demand <sup>8</sup>	19:15	928 MW
Fri, Oct 13, 2017	Forecast Island Peak Demand		990 MW

Notes:

8. Island Demand is supplied by NLH generation and purchases, plus generation owned and operated by Newfoundland Power and Corner Brook Pulp & Paper (Deer Lake Power, DLP).